



Council Chair  
Danny A. Mateo

Tel: 270-7678  
Fax: 270-7717  
Moloka'i: 553-3888  
Moloka'i Fax: 553-3055  
E-mail: <danny.mateo@mauicounty.us>

Moloka'i



Council Vice-Chair  
Michael J. Molina

Tel: 270-5507  
Fax: 270-5508  
E-mail: <michael.molina@mauicounty.us>

Makawao-Ha'ikū-Pā'ia



Councilmember  
Gladys Coelho Baisa

Tel: 270-7939  
Fax: 270-7127  
E-mail: <gladys.baisa@mauicounty.us>

Upcountry  
(Pukalani-Kula-Ulupalakua)



Councilmember  
Jo Anne Johnson

Tel: 270-5504  
Fax: 270-5505  
E-mail: <jo\_anne.johnson@mauicounty.us>

West Maui



Councilmember  
Sol P. Kaho'ohalahala

Tel: 270-7768  
Fax: 270-7848  
Lana'i: 565-7094  
Lana'i Fax: 565-6436  
E-mail: <sol.kahoohalahala@mauicounty.us>

Lāna'i



Councilmember  
Bill Kauakea Medeiros

Tel: 270-7246  
Fax: 270-7247  
Hana: 248-7513  
Hana Fax: 248-7514  
E-mail: <bill.medeiros@mauicounty.us>

East Maui  
(Hana-Keanae-Kailua)



Councilmember  
Wayne K. Nishiki

Tel: 270-7108  
Fax: 270-7119  
E-mail: <wayne.nishiki@mauicounty.us>

South Maui



Councilmember  
Joseph Pontanilla

Tel: 270-5501  
Fax: 270-5502  
E-mail: <joseph.pontanilla@mauicounty.us>

Kahului



Councilmember  
Michael P. Victorino

Tel: 270-7760  
Fax: 270-7639  
E-mail: <michael.victorino@mauicounty.us>

Wailuku-Waihe'e-Waikapū

**COUNCIL MEETINGS** are generally held on the 1st and 3rd **FRIDAYS** of each month at 9 a.m. in the Council Chamber, 8th floor of the County Building. **SPECIAL COUNCIL MEETINGS** may be called when deemed necessary. **Contact the Office of the County Clerk\* for current information.**

**COUNCIL COMMITTEE MEETINGS** are generally held during each Council meeting week in the Council Chamber, 8th floor of the County Building. Days and times are listed below. **MEETING DATES ARE SUBJECT TO CHANGE OR CANCELLATION. Contact the Office of Council Services\*\* for current information.**

**POSTING OF AGENDAS** is 7 days prior to regularly scheduled Council meetings, and at least 6 days prior to Special Council and Committee meetings.

**COUNCIL AND COMMITTEE MEETINGS SCHEDULE**

**MONDAY**

9:00 a.m. **Infrastructure Management Committee (IM)**

1:30 p.m. **Planning Committee (PC)**

**TUESDAY**

9:00 a.m. **Water Resources Committee (WR)**

1:30 p.m. **Budget and Finance Committee (BF)**

**WEDNESDAY**

9:00 a.m. **Public Services Committee (PS)**

1:30 p.m. **Land Use Committee (LU)**

**THURSDAY**

9:00 a.m. **Committee of the Whole (COW)**

1:30 p.m. **Economic Development, Agriculture, and Recreation Committee (EAR)**

**FRIDAY**

9:00 a.m. **Council Meeting**

**ORAL AND WRITTEN TESTIMONY** may be presented on any agenda item. For Council meetings, oral testimony shall be limited to 3 minutes on each item. For each item, at the end of 3 minutes, the Council Chair shall allow a person an additional minute to conclude testimony on the item if requested. Written testimony for Council meetings may be faxed to 270-7171 or e-mailed to <county.clerk@mauicounty.us> at least 24 hours prior to the meeting start time. For Committee meetings, oral testimony shall be administered by the Chair. Written testimony for Committee meetings may be faxed to 270-7686 or sent to the Committee e-mail address listed on the Committee meeting agenda, in accordance with the deadlines noted on the agenda.

**AGENDA ITEMS MAY BE REVIEWED** prior to the meeting date and photocopies may be ordered, subject to charges imposed by law (Maui County Code, Chapter 2.64).

**INDIVIDUALS WITH DISABILITIES WHO WISH TO ATTEND THE MEETINGS AND REQUIRE SPECIAL ASSISTANCE SHOULD CALL AT LEAST 3 DAYS IN ADVANCE.**

**FOR COUNCIL INFORMATION OR TESTIMONY:**

\*OFFICE OF THE COUNTY CLERK: 270-7748, 270-7171 (Fax), 800-272-0026 (from Moloka'i), 800-272-0098 (from Lāna'i)

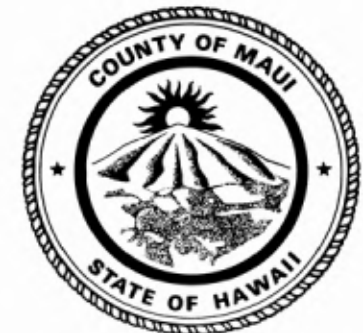
**FOR COMMITTEE INFORMATION OR TESTIMONY:**

\*\*OFFICE OF COUNCIL SERVICES: 270-7838, 270-7686 (Fax), 800-272-0026 (from Moloka'i), 800-272-0098 (from Lāna'i)

(01/09)

# 2009

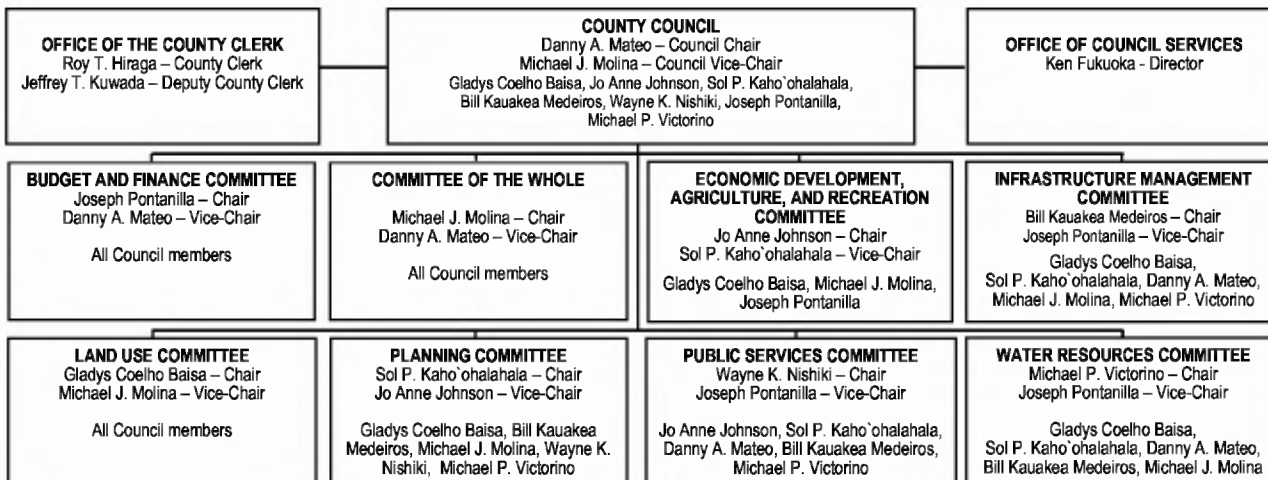
# MAUI COUNTY COUNCIL CALENDAR



**MAUI COUNTY COUNCIL**

**DANNY A. MATEO  
COUNCIL CHAIR**

## LEGISLATIVE BRANCH OF THE COUNTY OF MAUI



Voting members are listed in the organizational chart. Council members who are not listed under a committee are non-voting members.

# 2009 MAUI COUNTY COUNCIL CALENDAR

For current Council information, call the Office of Council Services at 270-7838 (from Maui), 800-272-0026 (from Moloka'i), or 800-272-0098 (from Lāna'i), or visit our website at <http://www.mauicounty.gov>

## JANUARY

| SUN | MON   | TUE | WED                                 | THU                         | FRI  | SAT |
|-----|---|-----|-------------------------------------|-----------------------------|--|-----|
|     |   |     |                                     | 1 HOLIDAY<br>New Year's Day | 2 Inauguration/<br>Organizational<br>Meeting | 3   |
| 4   | 5   | 6   | 7                                   | 8                           | 9  | 10  |
| 11  | 12  | 13  | 14                                  | 15                          | 16   | 17  |
| 18  | 19 HOLIDAY<br>Martin Luther<br>King Jr. Day | 20  | 21 Opening<br>Day of<br>Legislature | 22                          | 23   | 24  |
| 25  | 26  | 27  | 28                                  | 29 Council<br>Meeting       | 30   | 31  |

## FEBRUARY

|    |                                  |                          |                          |                          |                       |    |
|----|----------------------------------|--------------------------|--------------------------|--------------------------|-----------------------|----|
| 1  | 2                                | 3                        | 4                        | 5                        | 6 Council<br>Meeting  | 7  |
| 8  | 9                                | 10                       | 11                       | 12                       | 13                    | 14 |
| 15 | 16 HOLIDAY<br>Presidents'<br>Day | 17 Committee<br>Meetings | 18 Committee<br>Meetings | 19 Committee<br>Meetings | 20 Council<br>Meeting | 21 |
| 22 | 23                               | 24                       | 25                       | 26                       | 27                    | 28 |

## MARCH

|        |                         |                         |                         |                                   |                       |        |
|--------|-------------------------|-------------------------|-------------------------|-----------------------------------|-----------------------|--------|
| 1      | 2 Committee<br>Meetings | 3 Committee<br>Meetings | 4 Committee<br>Meetings | 5 Committee<br>Meetings           | 6 Council<br>Meeting  | 7 NACo |
| 8 NACo | 9 NACo                  | 10 NACo                 | 11 NACo                 | 12                                | 13                    | 14     |
| 15     | 16                      | 17                      | 18                      | 19 Budget<br>Session              | 20 Council<br>Meeting | 21     |
| 22     | 23 Budget<br>Session    | 24 Budget<br>Session    | 25 Budget<br>Session    | 26 HOLIDAY<br>Prince Kuhio<br>Day | 27 Budget<br>Session  | 28     |
| 29     | 30 Budget<br>Session    | 31 Budget<br>Session    |                         |                                   |                       |        |

## APRIL

|    |                      |                      |                      |                      |                           |    |
|----|----------------------|----------------------|----------------------|----------------------|---------------------------|----|
|    |                      |                      | 1 Budget<br>Session  | 2 Budget<br>Session  | 3 Council<br>Meeting      | 4  |
| 5  | 6 Budget<br>Session  | 7 Budget<br>Session  | 8 Budget<br>Session  | 9 Budget<br>Session  | 10 HOLIDAY<br>Good Friday | 11 |
| 12 | 13 Budget<br>Session | 14 Budget<br>Session | 15 Budget<br>Session | 16 Budget<br>Session | 17 Council<br>Meeting     | 18 |
| 19 | 20 Budget<br>Session | 21 Budget<br>Session | 22 Budget<br>Session | 23 Budget<br>Session | 24 Budget<br>Session      | 25 |
| 26 | 27 Budget<br>Session | 28                   | 29                   | 30                   |                           |    |

## MAY

| SUN   | MON                        | TUE | WED    | THU  | FRI  | SAT |
|-------|----------------------------|-----|--------|--|--|-----|
|       |                            |     |        |  | 1 Council<br>Meeting                                       | 2   |
| 3     | 4                          | 5   | 6      | 7 Adjournment<br>of State<br>Legislature                           | 8  | 9   |
| 10    | 11                         | 12  | 13     | 14   | 15 Council<br>Meeting<br>1 <sup>st</sup> Reading of Budget | 16  |
| 17    | 18                         | 19  | 20 WIR | 21 WIR   | 22 WIR   | 23  |
| 24/31 | 25 HOLIDAY<br>Memorial Day | 26  | 27     | 28 Special<br>Council Meeting<br>2 <sup>nd</sup> Reading of Budget | 29   | 30  |

## JUNE

|         |                                  |                                  |                                  |                                       |                               |    |
|---------|----------------------------------|----------------------------------|----------------------------------|---------------------------------------|-------------------------------|----|
|         | 1 Committee<br>Meetings          | 2 Committee<br>Meetings          | 3 Committee<br>Meetings          | 4 Committee<br>Meetings               | 5 Council<br>Meeting          | 6  |
| 7       | 8                                | 9                                | 10                               | 11 HOLIDAY<br>King<br>Kamehameha Day  | 12                            | 13 |
| 14 AWWA | 15 Committee<br>Meetings<br>AWWA | 16 Committee<br>Meetings<br>AWWA | 17 Committee<br>Meetings<br>AWWA | 18 Committee<br>Meetings<br>AWWA HSAC | 19 Council<br>Meeting<br>HSAC | 20 |
| 21      | 22                               | 23                               | 24                               | 25                                    | 26                            | 27 |
| 28      | 29 Committee<br>Meetings         | 30 Committee<br>Meetings         |                                  |                                       |                               |    |

## JULY

|         |                          |                          |                          |                          |                               |         |
|---------|--------------------------|--------------------------|--------------------------|--------------------------|-------------------------------|---------|
|         |                          |                          | 1 Committee<br>Meetings  | 2 Committee<br>Meetings  | 3 HOLIDAY<br>Independence Day | 4       |
| 5       | 6                        | 7 Council<br>Meeting     | 8                        | 9                        | 10                            | 11      |
| 12      | 13 Committee<br>Meetings | 14 Committee<br>Meetings | 15 Committee<br>Meetings | 16 Committee<br>Meetings | 17 Council<br>Meeting         | 18      |
| 19      | 20                       | 21                       | 22                       | 23                       | 24 NACo                       | 25 NACo |
| 26 NACo | 27 NACo                  | 28 NACo                  | 29                       | 30                       | 31                            |         |

## AUGUST

|    |                          |                          |                          |                          |                                |     |
|----|--------------------------|--------------------------|--------------------------|--------------------------|--------------------------------|-----|
| 2  | 3 Committee<br>Meetings  | 4 Committee<br>Meetings  | 5 Committee<br>Meetings  | 6 Committee<br>Meetings  | 7 Council<br>Meeting           | 1/8 |
| 9  | 10                       | 11                       | 12                       | 13                       | 14                             | 15  |
| 16 | 17 Committee<br>Meetings | 18 Committee<br>Meetings | 19 Committee<br>Meetings | 20 Committee<br>Meetings | 21 HOLIDAY<br>Statehood<br>Day | 22  |
| 23 | 24                       | 25 Council<br>Meeting    | 26                       | 27                       | 28                             | 29  |
| 30 | 31 Committee<br>Meetings |                          |                          |                          |                                |     |

## SEPTEMBER

| SUN | MON                      | TUE                      | WED                      | THU                      | FRI                   | SAT |
|-----|--------------------------|--------------------------|--------------------------|--------------------------|-----------------------|-----|
|     |                          | 1 Committee<br>Meetings  | 2 Committee<br>Meetings  | 3 Committee<br>Meetings  | 4 Council<br>Meeting  | 5   |
| 6   | 7 HOLIDAY<br>Labor Day   | 8                        | 9                        | 10                       | 11                    | 12  |
| 13  | 14 Committee<br>Meetings | 15 Committee<br>Meetings | 16 Committee<br>Meetings | 17 Committee<br>Meetings | 18 Council<br>Meeting | 19  |
| 20  | 21                       | 22                       | 23                       | 24                       | 25                    | 26  |
| 27  | 28 Committee<br>Meetings | 29 Committee<br>Meetings | 30 Committee<br>Meetings |                          |                       |     |

## OCTOBER

|               |                          |                          |                          |                          |  |                                     |               |
|---------------|--------------------------|--------------------------|--------------------------|--------------------------|--|-------------------------------------|---------------|
|               |                          |                          |                          |                          | 1 Committee<br>Meetings<br>County Fair | 2 Council<br>Meeting<br>County Fair | 3 County Fair |
| 4 County Fair | 5                        | 6                        | 7                        | 8                        | 9                                      | 10                                  |               |
| 11            | 12 Committee<br>Meetings | 13 Committee<br>Meetings | 14 Committee<br>Meetings | 15 Committee<br>Meetings | 16 Council<br>Meeting                  | 17                                  |               |
| 18            | 19                       | 20                       | 21                       | 22                       | 23                                     | 24                                  |               |
| 25            | 26                       | 27                       | 28                       | 29                       | 30                                     | 31                                  |               |

## NOVEMBER

|    |                          |                          |                             |                                |                       |    |
|----|--------------------------|--------------------------|-----------------------------|--------------------------------|-----------------------|----|
| 1  | 2 Committee<br>Meetings  | 3 Committee<br>Meetings  | 4 Committee<br>Meetings     | 5 Committee<br>Meetings        | 6 Council<br>Meeting  | 7  |
| 8  | 9                        | 10                       | 11 HOLIDAY<br>Veterans' Day | 12                             | 13                    | 14 |
| 15 | 16 Committee<br>Meetings | 17 Committee<br>Meetings | 18 Committee<br>Meetings    | 19 Committee<br>Meetings       | 20 Council<br>Meeting | 21 |
| 22 | 23                       | 24                       | 25                          | 26 HOLIDAY<br>Thanksgiving Day | 27                    | 28 |
| 29 | 30 Committee<br>Meetings |                          |                             |                                |                       |    |

## DECEMBER

|    |                          |                          |                          |                          |                             |    |
|----|--------------------------|--------------------------|--------------------------|--------------------------|-----------------------------|----|
|    |                          | 1 Committee<br>Meetings  | 2 Committee<br>Meetings  | 3 Committee<br>Meetings  | 4 Council<br>Meeting        | 5  |
| 6  | 7                        | 8                        | 9                        | 10                       | 11                          | 12 |
| 13 | 14 Committee<br>Meetings | 15 Committee<br>Meetings | 16 Committee<br>Meetings | 17 Committee<br>Meetings | 18 Council<br>Meeting       | 19 |
| 20 | 21                       | 22                       | 23                       | 24                       | 25 HOLIDAY<br>Christmas Day | 26 |
| 27 | 28                       | 29                       | 30                       | 31                       |                             |    |

**Abbreviations used to denote conferences:** AWWA = American Water Works Association (San Diego, CA) NACo = National Association of Counties (March conference in Washington, D.C. and July conference in Nashville, TN) WIR = Western Interstate Region, a NACo affiliate (Pendleton, OR) HSAC = Hawaii State Association of Counties (Kauai, HI)